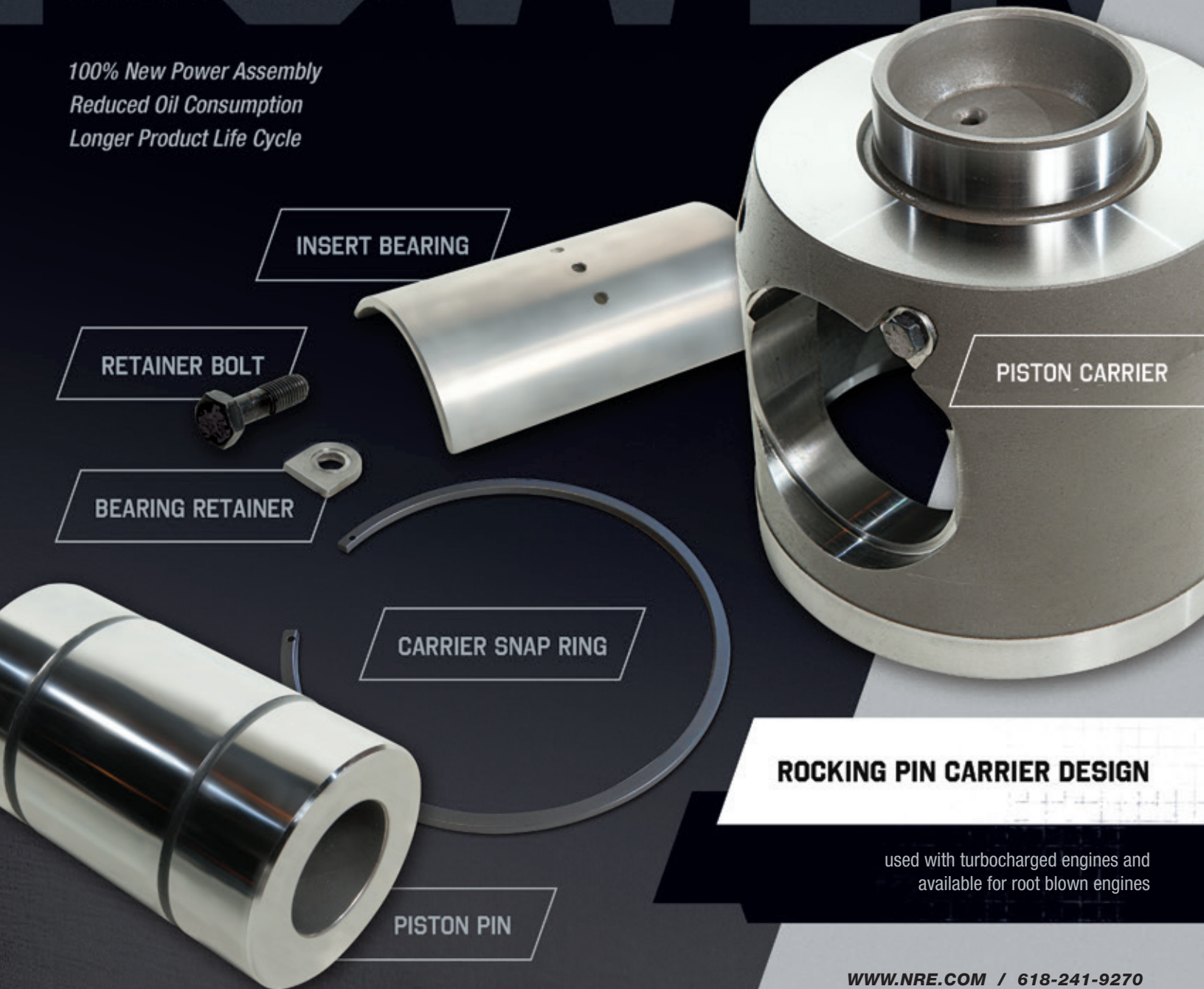




# NPOWER TIER 0 PLUS CERTIFIED POWER ASSEMBLIES

MARINE / POWER / LOCOMOTIVE

100% New Power Assembly  
Reduced Oil Consumption  
Longer Product Life Cycle



INSERT BEARING

RETAINER BOLT

BEARING RETAINER

CARRIER SNAP RING

PISTON PIN

PISTON CARRIER

## ROCKING PIN CARRIER DESIGN

used with turbocharged engines and  
available for root blown engines



# COMPLETE LINE OF 710 AND 645 EMD\* POWER ASSEMBLIES & COMPONENTS

*NRE products are changing the industry standards with dependable power assembly components and service.*



## LINERS

### PLATEAU HONED LINERS

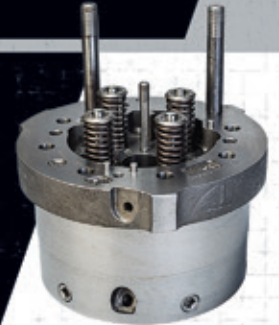
- Reduced oil consumption and PM
- Laser Hardened Upper Bore

### IMPROVED LINER STUD BOSSES REDUCE BORE DISTORTION

- Precision laser hardening process provides extended power assembly life

## RADIAL FLOW HEAD

- Radial flow improves cooling, adds uniform stress characteristics, and reduces or eliminates cracking
- Standard use of through hardened valve guides which resists wear and aids in prolonging valve life



## PREMIUM PISTON

- Hardened upper ring groove significantly reduces ring groove wear
- Tin plated skirt aids lubrication during break in and reduces scuffing tendencies

## BLADE ROD

- Slipper surface is micropolished to reduce wear of the fishback bearing
- Increased radius at the toe end reduces bearing failures

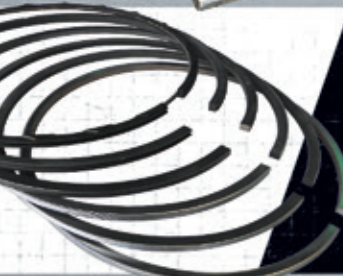
## FORK ROD

- Increased radius at beam to basket reduces fatigue cracking
- Stiffer rod at pin end reduces twist and bend



## RING SET

- Low oil consumption rings for less smoke & lower Particulate Matter
- Pre-stressed stainless steel top ring for durability



CHECK OUT OUR ECONOMY LINE OF NLIFE POWER ASSEMBLIES, COVERING ALL YOUR BASIC POWER ASSEMBLY AND SINGLE PACK REPLACEMENT NEEDS.

## FLAT HEAD VALVE

- The new Flat Head Valve reduce valve & head seat wear
- To further reduce valve & head seat wear, we also offer Valve Rotators

