



Specifications

General Data

Model Designation 1GS-8B

Emmissions (US EPA) Tier 0

Power (Gross) 800 HP
(Single Engine)

Wheel Arrgt. (AAR) B-B

Dimensions

AAR Plate N/A

Over Pulling Faces 43' 0"
(13,106mm)

Width Over Grab Irons 9' 10 1/2"
(3010mm)

Maximum Height 13' 11"
Above Rail (4241mm)

Wheel Diameter 40"
(1016mm)

Minimum Curve 150ft - 38 Deg.
Radius-Single Unit (46 m - 25 Deg.)

Track Gauge 66"
(1676mm)

Mass

Fully Serviced 264,555 lbs.
(120,000 kgs)

Tons/Axle 28.93
(26.25 tonnes)

Supplies

Fuel 1000 gal (3785L)

Sand N/A

Coolant 45 gal (170L)
Per Engine

Lubricating Oil 14 gal (53L)
Per Engine

Retention Tank 60 gal (227L)

Equipment

Engine Model QSK19C

Generator model 572RDL (600KW)

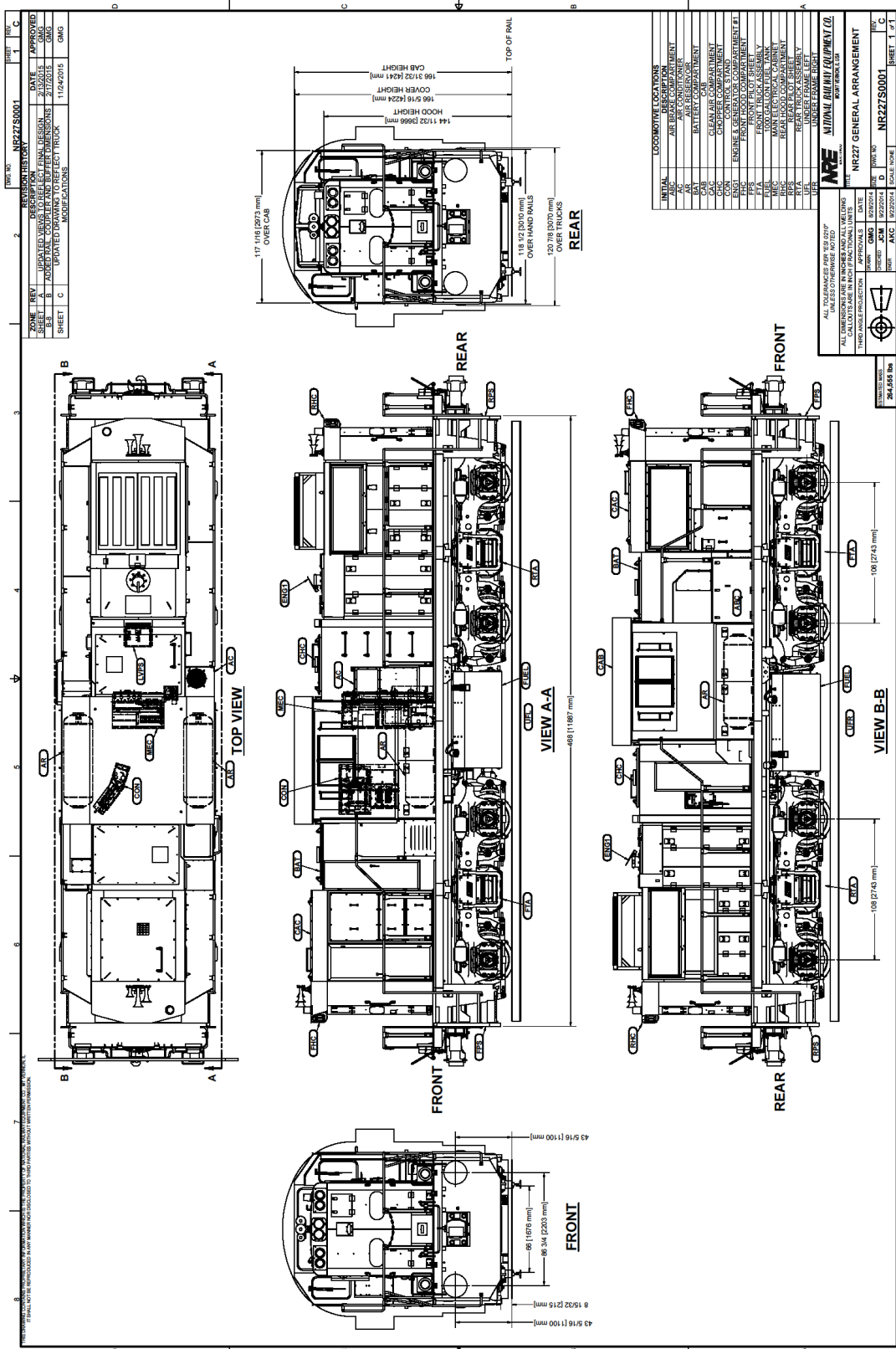
Air Compressor GAR37

Air Brake FastBrake (Wabtec)

Microprocessor N-FORCE

Traction Motors D77-B

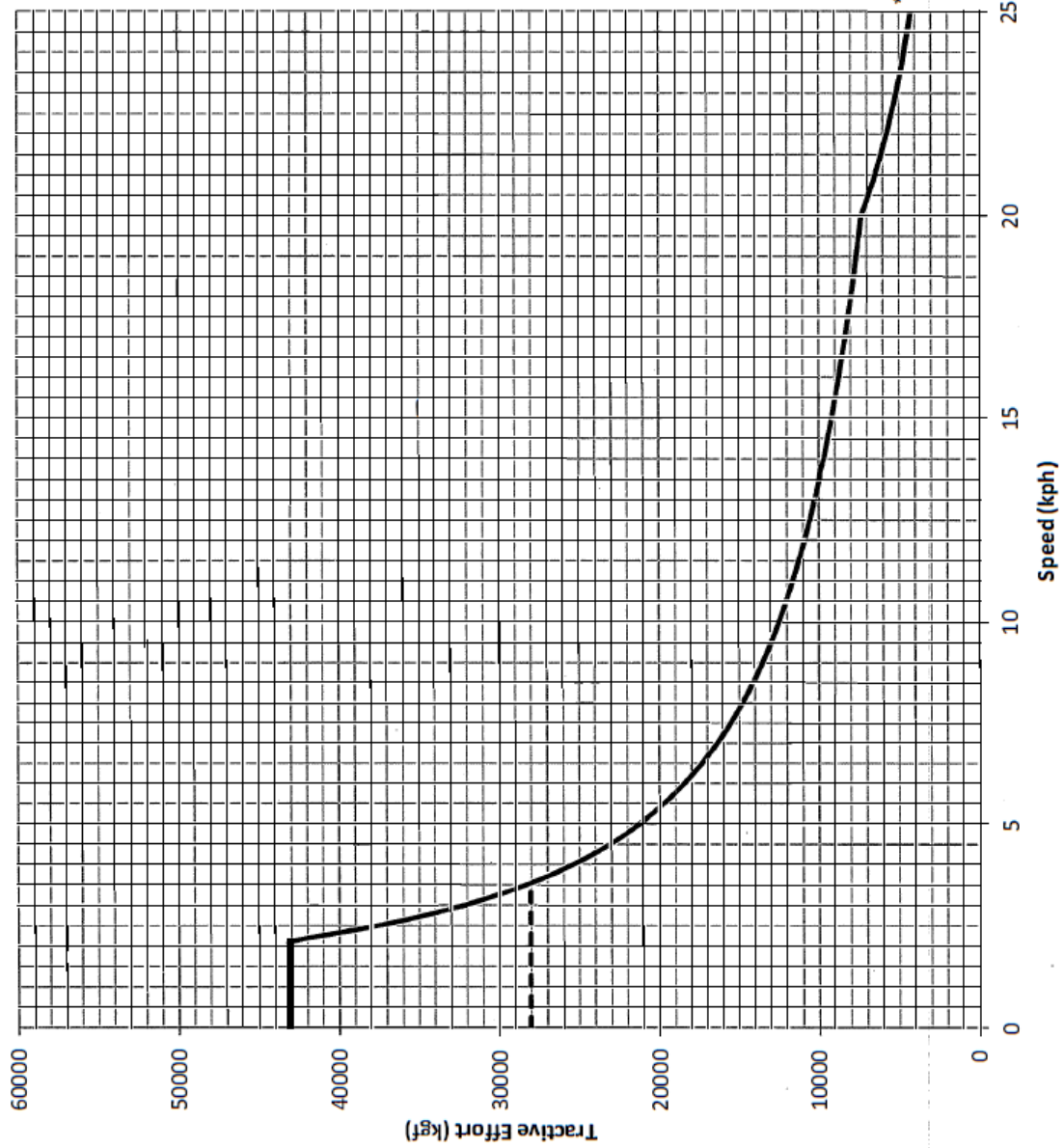
Traction Controller NRE DC chopper
(Independent Axle) IGBT





Model:	1GS8B (Ternium)	Engine type:	QSK19 HPI
Mass:	120 tonnes	Power Rating:	750 bhp @ 1800 rpm
Traction Motors:	D77/78	US Emissions Cert:	N/A
Gear Ratio:	62:15	Starting TE:	43101 kgf
Wheel Diameter:	914.4 mm	Continuous TE:	28048 kgf
Traction Power:	650 hp	Continuous Speed:	3.5 kph

Tractive Effort vs. Speed



* Actual traction power may vary. Entire curve may not be available at all times due to limitations of wheel/rail adhesion