



Specifications

General Data

Model Designation	E2000C
Emmissions (US EPA)	Tier 0+
Power (gross)	2000 HP
Wheel Arrgt. (AAR)	C-C

Dimensions

AAR Plate	n/a
Over Pulling Faces	64'11" (19,800mm)
Width Over Grab Irons	10'8" (3250mm)
Maximum height above rail	17'8" (5380mm)
Wheel diameter	40" (1016mm)
Minimum curve radius-single unit	229ft – 25.1 Deg. (70m – 16.5 Deg.)
Track Gauge	56" (1435mm)

Mass

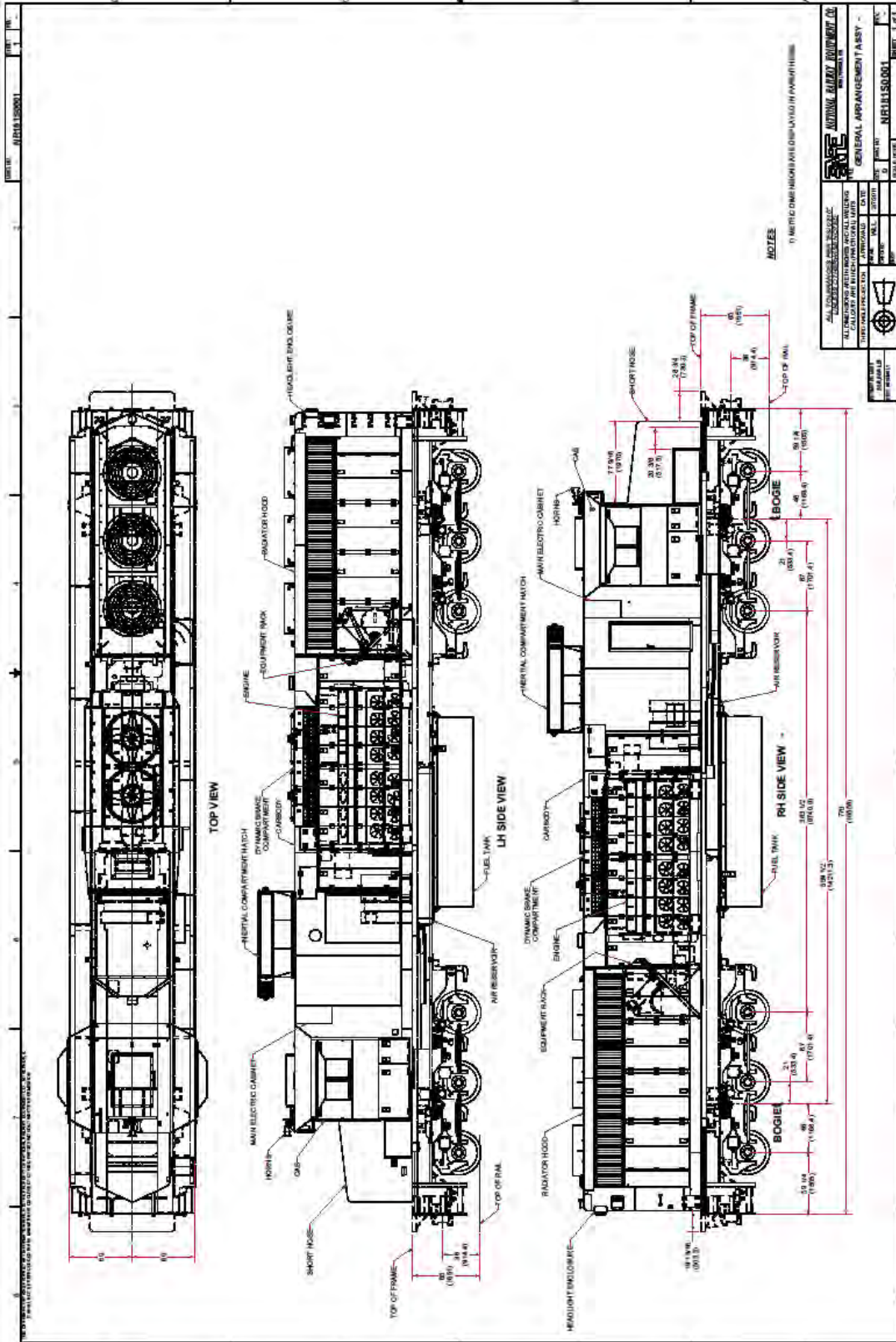
Fully Serviced	260,145lbs (117,999kgs)
Tons/Axle	21.7 tons (19.7 tonnes)

Supplies

Fuel	3,000 gal (11,356L)
Sand	53 ft ³ (1.5m ³)
Coolant	240 gal (908L)
Lubricating oil	395 gal (1495L)
Retention tank	100 gal (378L)

Equipment

Engine model	16-645-E
Generator model	AR10-D14
Air compressor model	Gardner-Denver WBO
Air brake model	CCB26
Microprocessor model	N-FORCE
Traction motors	D87 BTR
Traction Control	AC-DC



TRACTIVE EFFORT VS. SPEED
Saudi Arabia E2000C

