



**Specifications**

**General Data**

Model Designation E3500C

Emmissions Tier 0+  
(US EPA)

Power (gross) 3500 HP

Wheel Arrgt. (AAR) C-C

**Dimensions**

AAR Plate n/a

Over Pulling Faces 68'4"  
(20,828mm)

Width Over Grab 10'4"  
Irons (3149mm)

Maximum height 15'9"  
above rail (4813mm)

Wheel diameter 40"  
(1016mm)

Minimum curve 260ft – 22 Deg.  
radius-single unit (80m – 14.5 Deg.)

Track Gauge 56 ½ "  
(1435mm)

**Mass**

Fully Serviced 330,000 lbs  
(149,685 kgs)

Tons/Axle 27.5  
(24.9 tonnes)

**Supplies**

Fuel 3,000 gal  
(11,356L)

Sand 53 ft<sup>3</sup>  
(1.5m<sup>3</sup>)

Coolant 276 gal  
(1045L)

Lubricating oil 395 gal (1,495L)

Retention tank 100 gal (378L)

**Equipment**

Engine model 16-645 F3B

Generator model AR11-CA5

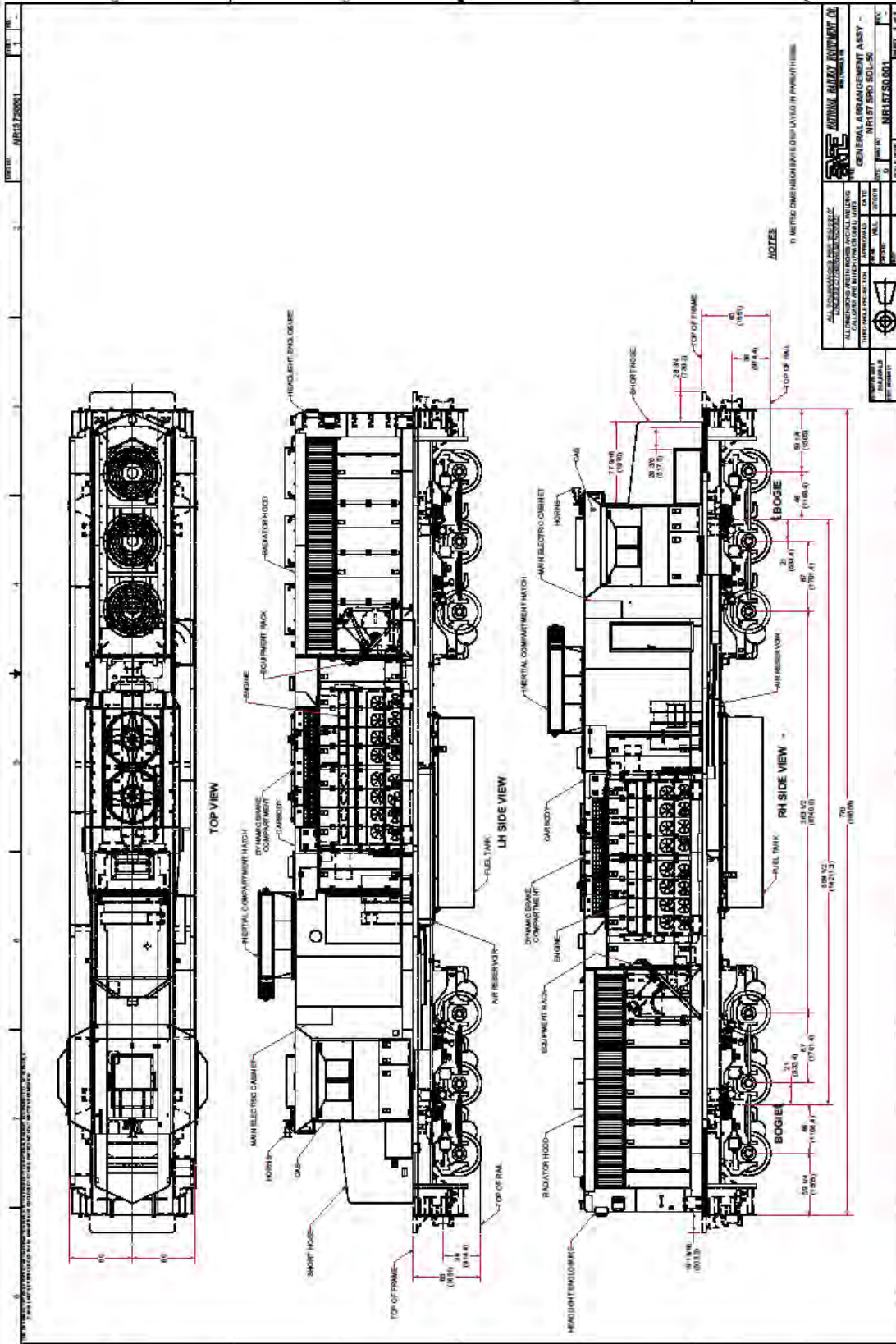
Air compressor model WBO

Air brake model CCB26

Microprocessor model N-FORCE

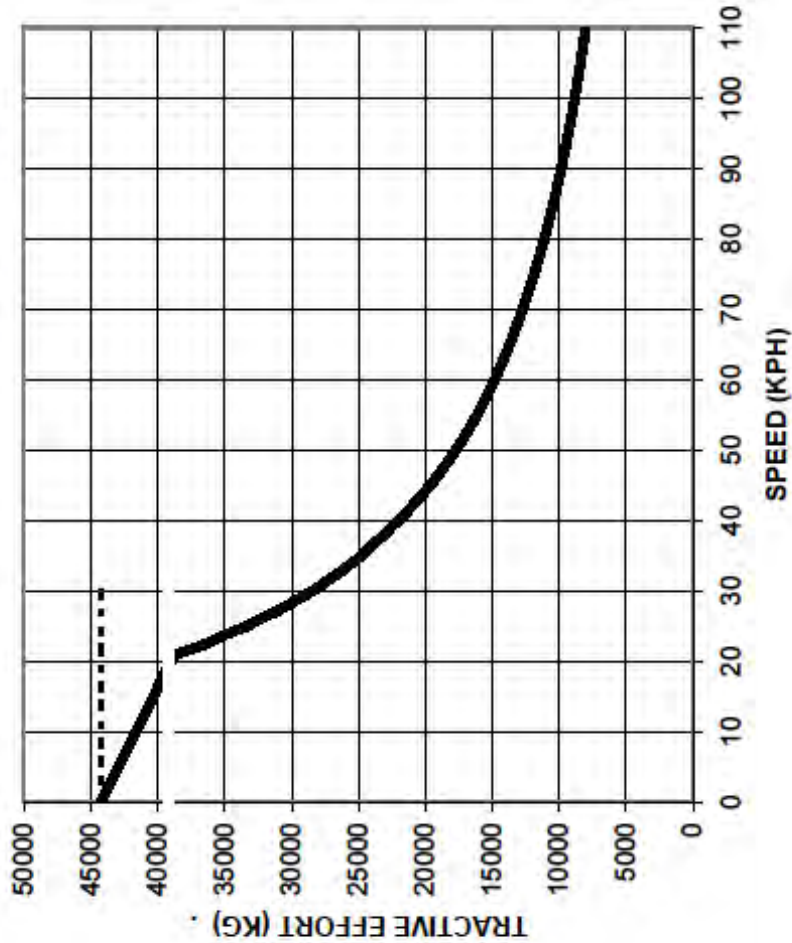
Traction motors D87 BTR

Traction Control AC-DC



**TRACTIVE EFFORT vs. SPEED**

**SRO E-3500**



70:17 Gear Ratio  
 1.04775 M Wheel Diameter  
 150 Tonnes  
 3500 Traction Horsepower  
 D87 Traction Motors

Actual THP May Vary  
 Entire Curve May Not Be Available  
 At All Times Due To Limitations of  
 Wheel/Rail Adhesion

Adhesion Rating 26.5%  
 Continuous Speed = 20.8 KPH

— Tractive Effort  
 - - - Dispatch T. E. 44249  
 \_\_\_\_\_ Continuous T.E. 39196